

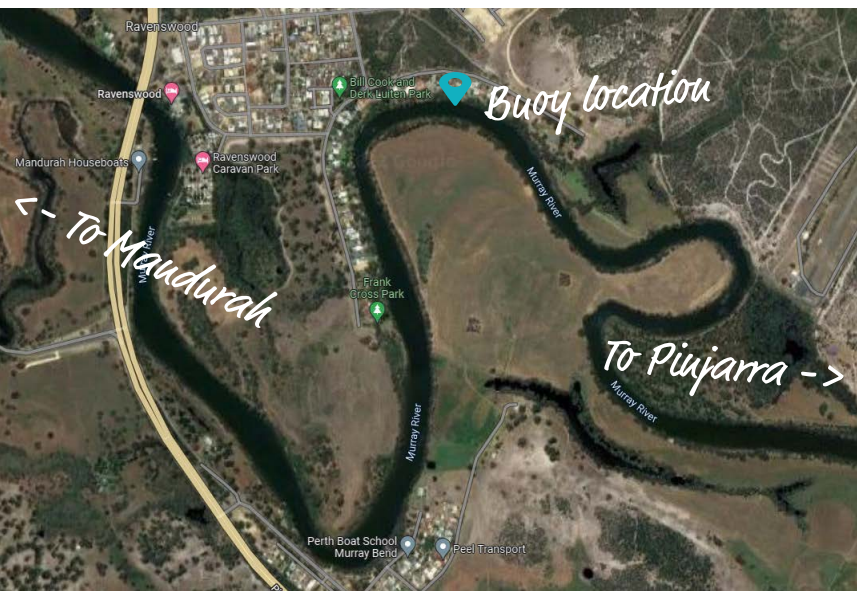
Murray River Water Quality Monitoring Station

The Department of Water and Environmental Regulation have installed a water quality monitoring station in the Murray River. The monitoring station is located in a yellow buoy in the river, near Rodoreda Crescent in Ravenswood.

The buoy provides important water quality monitoring data that helps us understand and respond to water quality issues. This monitoring equipment helps us work towards a healthier river and estuary, and make sure the river is safe for residents, tourism, and wildlife.

Keep your boat and our buoy safe:

- Proceed slowly while passing the buoy
- Allow at least 3 metres between your boat and the buoy
- Keep to the farm side of the buoy if possible
- If you notice the buoy looks damaged, please report it to us



Please report damage immediately to:

1800 645 191
peel@dwer.wa.gov.au



Learn more:

estuaries.dwer.wa.gov.au/estuary/peel-harvey-estuary/
rivers.dwer.wa.gov.au/basin/murray-river/

This project is part of the Bindjareb Djilba (Peel-Harvey estuary) Protection Plan and Healthy Estuaries WA, funded through the State Government's Royalties for Regions program.